

Dune 4505

PANEL

PANEL

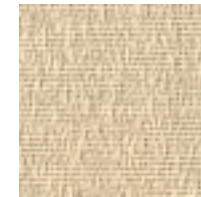
Dune 4505



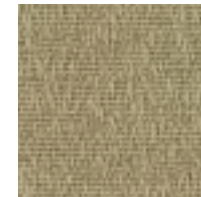
White
8888



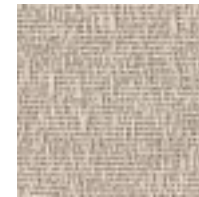
Drift
1200



Windblown
1201



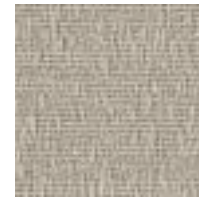
Palmetto
7106



Shell
7082



Haze
1203



Sandbar
6700



Breeze
1280



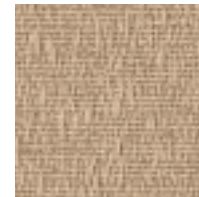
Seagrass
7109



Erosion
1202



Cloudburst
6701



Kamelos
1204



Nectar
1208



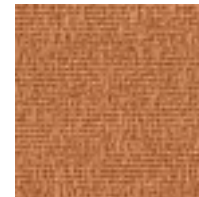
Gecho
1207



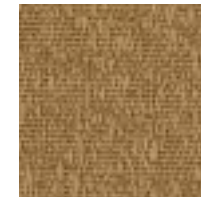
Boardwalk
7110



Clear Sky
1210



Hot Sun
1212



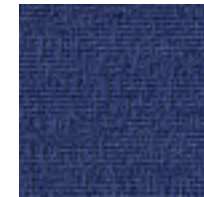
Golden
1281



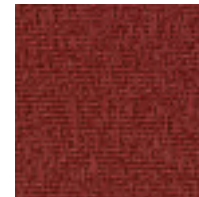
Blue Lagoon
7096



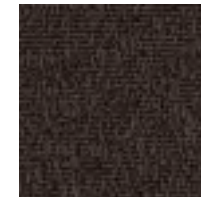
Caribbean
6658



Deep Night
1218



Turning Leaf
1286



Wharf
7108



Basin
1214



Raven
1215



Darkness
1220

Specifications

Content	100% polyester
Weight	11.0 ± 1.0 oz./lin. yd.
Width	66" min. useable
Repeat	16.4" vertical 13.9" horizontal

Cleaning Code


Standard Care Label W-S. Clean with water based cleaning agents, foam or pure, water free solvents. Vacuuming or light brushing is recommended to prevent dust and soil buildup.

Miscellaneous

Proudly woven in North America supporting our local communities.

Application testing of this product is recommended. Colors may vary between dye lots. This is a directional fabric.


Visit guilfordofmaine.com for samples.


 This pattern is included in the underwriters laboratory panel fabric recognition program. Additional testing of this U.L. recognized component fabric is not required on approved panels from participating manufacturers.


*Certification Marks owned by the Association for Contract Textiles, Inc.

Performance

 Colorfastness to Light (AATCC 16.3 Option 3)
Grade 4 min. at 40 hours

 Colorfastness to Crocking (AATCC 8)
Grade 4 min. dry & Grade 3 min. wet

 Breaking Strength (ASTM D5034)
160 lbf warp and 110 lbf fill

 Flammability (ASTM E84)
Class I or A

Sustainability



† Not available in USA