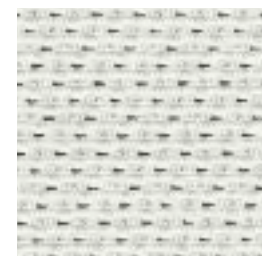


Tweed 2737

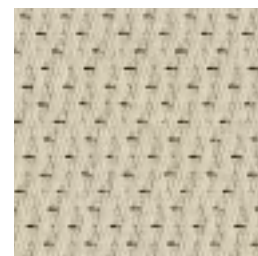
PANEL | ACOUSTIC

PANEL | ACOUSTIC

Tweed 2737



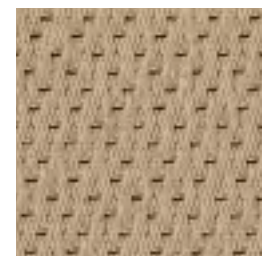
Bleach White
2766



Twinkle
2168



Concrete
2144



Wheat
2187



Stainless
2195



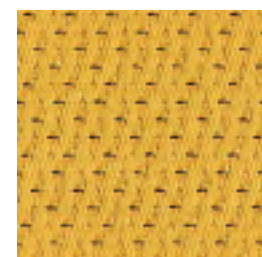
Grey Green
2196



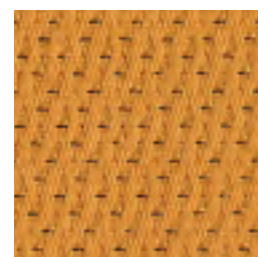
Sage Grass
2186



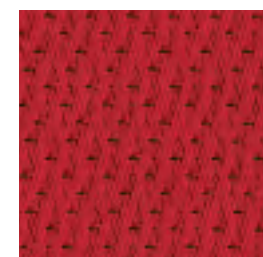
Metal
2193



Maize
2768



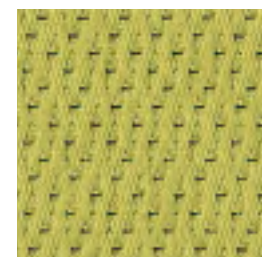
Orange
2767



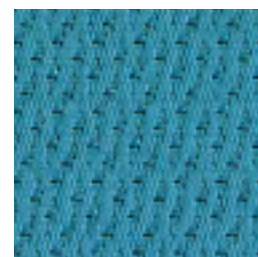
Lipstick
2770



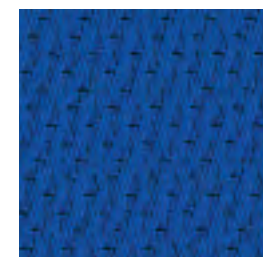
Raspberry
2769



Leaf
2772



Spa
2773



Royal Blue
2771



Java
2197

Specifications

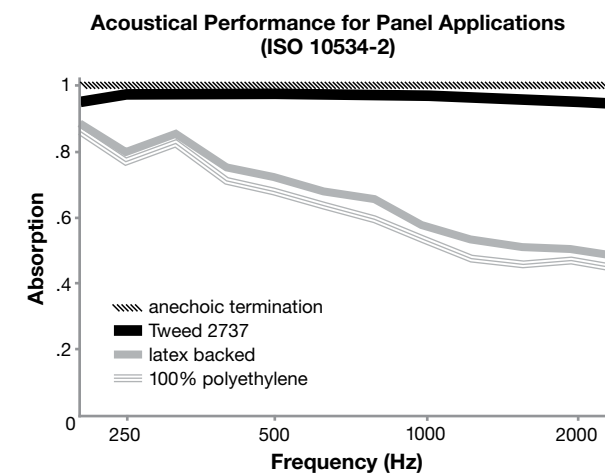
Content	25% post-consumer recycled polyester 75% pre-consumer recycled polyester
Weight	11.7 ± 1.0 oz./lin. yd.
Width	66" min. useable
Repeat	none

Cleaning Code

Standard Care Label W-S. Clean with water based cleaning agents, foam or pure, water free solvents. Vacuuming or light brushing is recommended to prevent dust and soil buildup.

Acoustical Performance

The plot below summarizes impedance tube measurements of absorption of an anechoic termination and various fabrics in front of the anechoic termination.



NRC of anechoic termination	1.00
NRC of fabric in front of anechoic termination	.95

Performance

- Colorfastness to Light (AATCC 16.3 Option 3)
Grade 4 min. at 40 hours
- Colorfastness to Crocking (AATCC 8)
Grade 4 min. dry & Grade 3 min. wet
- Breaking Strength (ASTM D5034)
225 lbf min. warp and 175 lbf min. fill
- Flammability (ASTM E84)
Class I or A

Sustainability

- 100% recycled and recyclable**
Terratek is a registered trademark of Duvaltex

Miscellaneous

Proudly woven in North America supporting our local communities.

Application testing of this product is recommended. Colors may vary between dye lots. This is a directional fabric.

Visit guilfordofmaine.com for samples.

This pattern is included in the underwriters laboratory panel fabric recognition program. Additional testing of this U.L. recognized component fabric is not required on approved panels from participating manufacturers.

*Certification Marks owned by the Association for Contract Textiles, Inc.