



ZONE Specifications

General

- System Thickness: 3 1/16"
- Unitized frames
- No shelf standard slots; storage units hung via mid-rails
- Panel Max Width: 48" (frame spanning avail. for solid tiles; textiles would be railroaded if required)
- Panel Min. Width: 8" solid; 12" clerestory; 36" beltline electric
- Panel Width Increments: 1"
- Panel Max Height: 10'
- Clerestory Min. Height: 12"
- Panel Height Increments: 1"
- Adjustability: +/- 1" at base
- Floor Attachment: floor track fastened to floor
- Ceiling Attachment: soffit or ceiling grid

Panel Type

- Full Solid
- Segmented Solid/Glass

Performance Tests

- ASTM E 90 - Sound Transmission Class (STC)
- ASTM E 84 - Flame Spread
- ANSI/BIFMA X5.6 - Load

Tile Finish

- Powder coated steel including Markerboard option
- Fabric wrapped (max width determined by fabric selection)
- Vinyl wrapped (COM or CS)
- Wood (FSC available)
- Double glazed clerestory: 1/4" tempered monolithic 1/4" tempered laminated 1/4" annealed laminated

Conditions

- Straight Runs
- Finished Ends
- Foreign Wall Attachments
- 2-way
- 3-way (no direct connection required; universal post available)
- 4-way
- Building & Furniture Module

Stacking Wall

- Base unit (mid-height) w/internal structural support post
- Window unit stacked on top of base unit
- Top & vertical end caps
- Base max height: 48"

Reveal

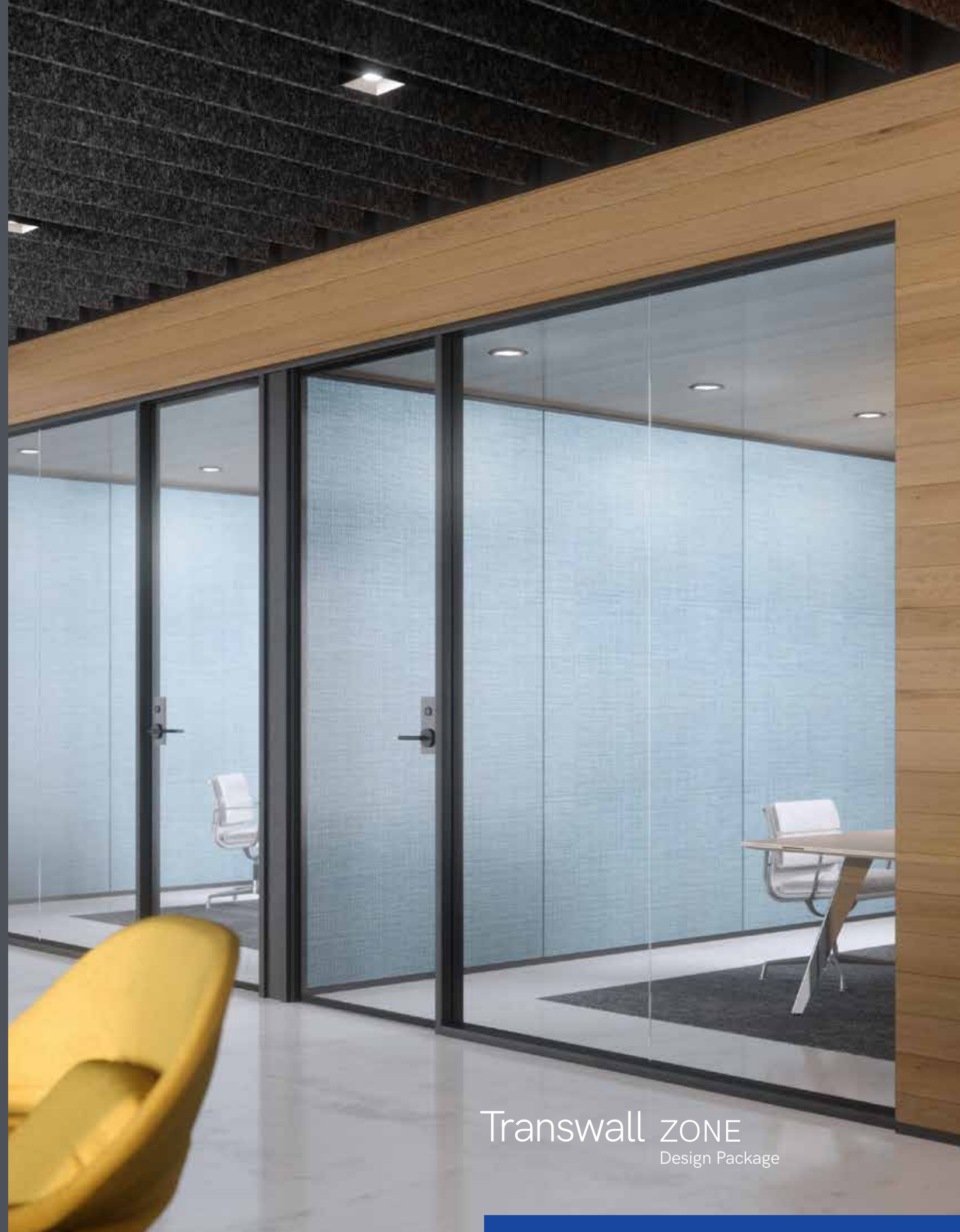
- 1 1/2" ceiling
- 1 1/4" floor (nominal)
- 1/8" panel to panel (less fabric thickness)

Electrical

- Available in panel face only; base N/A
- Hard Wired
- Quick Disconnect

Doors

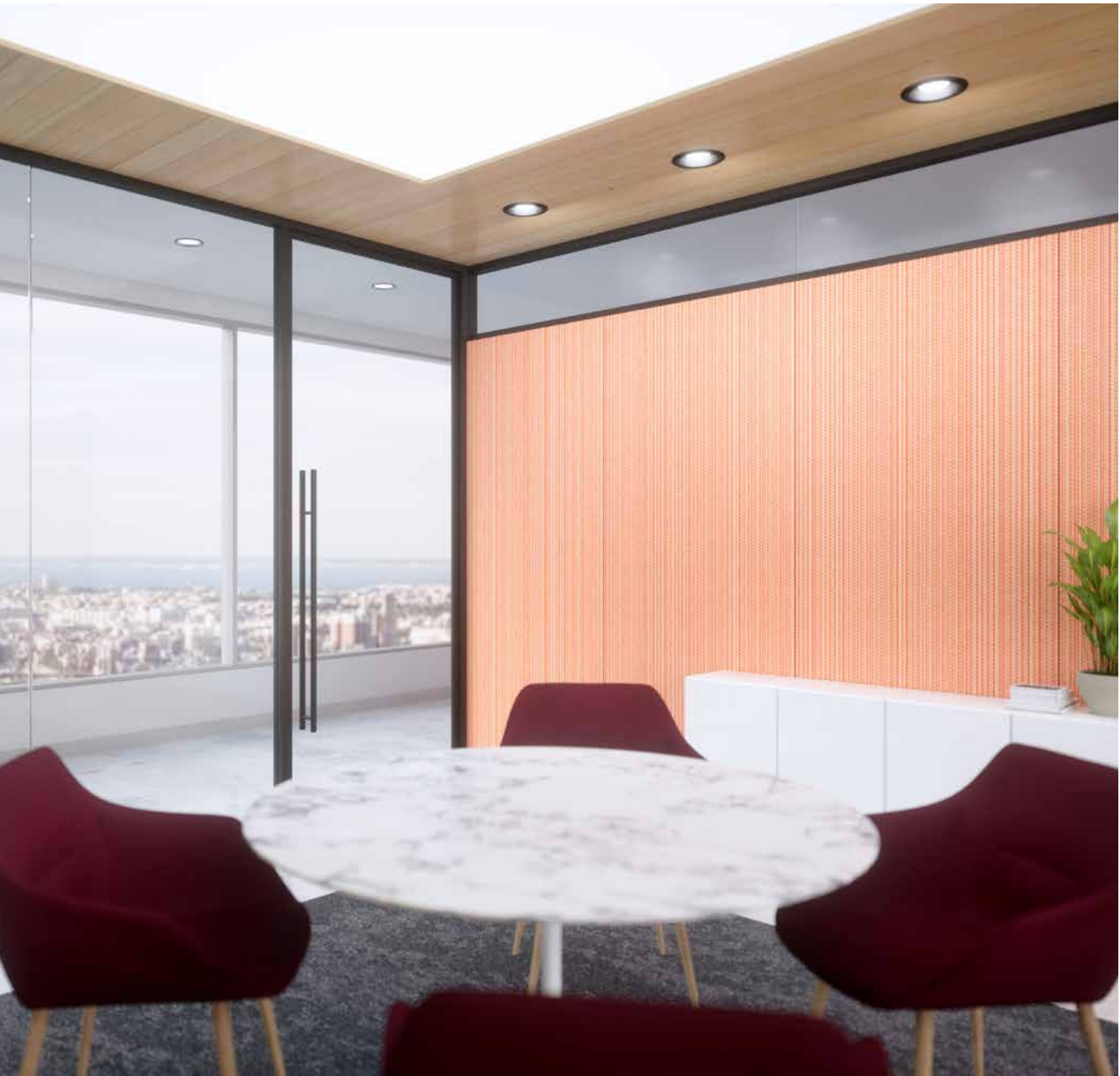
- Butt-hinge wood (flush & glass)
- Butt-hinge aluminum glass (Hutt's)
- Hydraulic-hinge 1/2" frameless glass



Transwall

transwall.com 800.441.9255

Transwall ZONE
Design Package



Moveable walls that open doors for business flexibility.

ZONE is a revolutionary moveable wall system that gives your business room to adapt easily and efficiently: low or high ceilings, openness or transparency, private office or conference room... the ZONE components accommodate varying conditions with ease and deconstruct/reconstruct when business change drives the need for workspace change. And within the efficiency of the standard ZONE system, options still abound for fabrics, panel finishes, and doors to create the look that sets you apart.