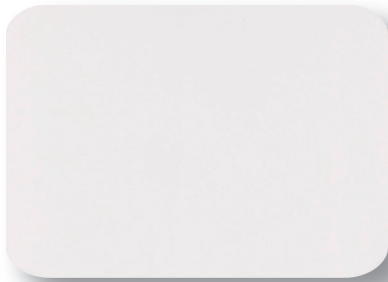
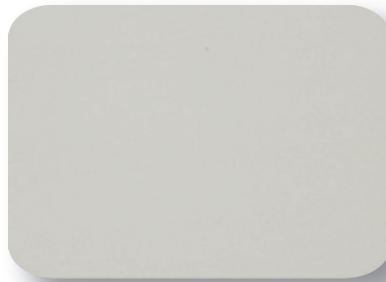


Transwall

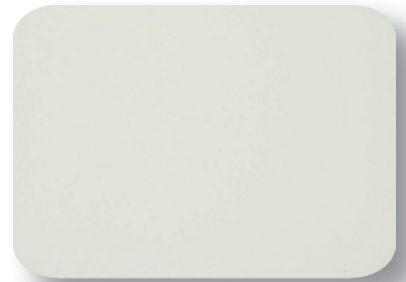
Paint



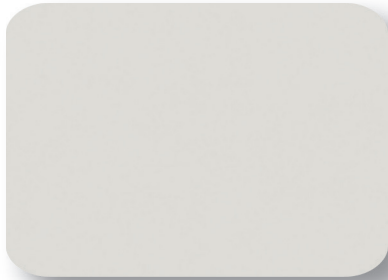
490 *Bright White*



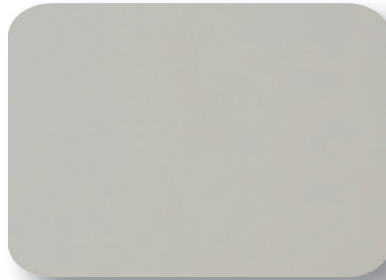
477 *Champagne*



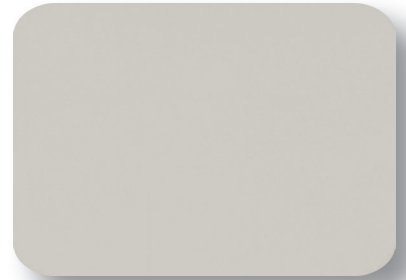
404 *White Shadow*



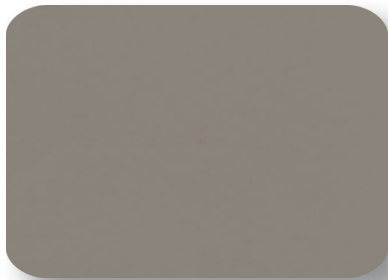
440 *Cloud*



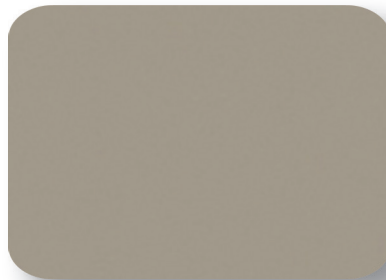
405 *Haze*



472 *Light Gray*



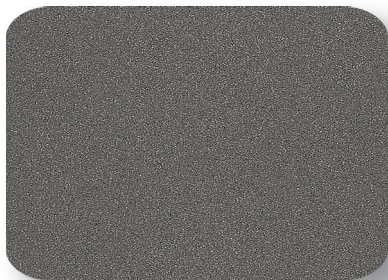
493 *Fossil*



425 *Shadow*



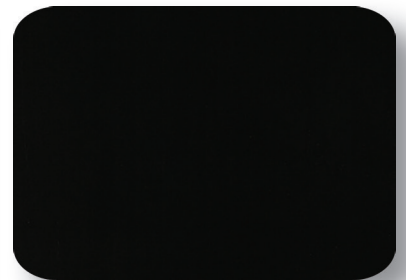
508 *Bronze Metallic*



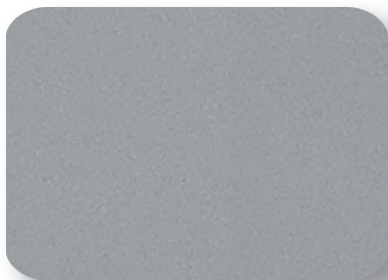
603 *Textured Dark Gray*



461 *Graphite*



462 *Black*



509 *Silver Metallic*

Important: *Samples should be viewed under indirect daylight.*

Statement of Line

462	<i>Black</i>
490	<i>Bright White</i>
508	<i>Bronze Metallic</i>
477	<i>Champagne</i>
440	<i>Cloud</i>
493	<i>Fossil</i>
461	<i>Graphite</i>
405	<i>Haze</i>
472	<i>Light Gray</i>
425	<i>Shadow</i>
509	<i>Silver Metallic</i>
603	<i>Textured Dark Gray</i>
404	<i>White Shadow</i>

Important Note:

Metallic & Textured Paints are not available on plastic components.

These printed samples are only meant as guidelines. Slight variations within commercial tolerance may occur in color and texture. Best color rendition when viewed under indirect daylight.

Obtain actual Paint samples from Customer Service if more precise matches are required.

Sample Orders:

*800.441.9255
info@transwall.com*



*Printed on Recycled Paper
10% Post-Consumer Waste*

*Transwall Office Systems, Inc.
1220 Wilson Drive
PO Box 1930
West Chester PA 19380*

*800.441.9255
610.429.1411 fax
www.transwall.com*

*© Copyright 2014
Transwall Office Systems, Inc.*